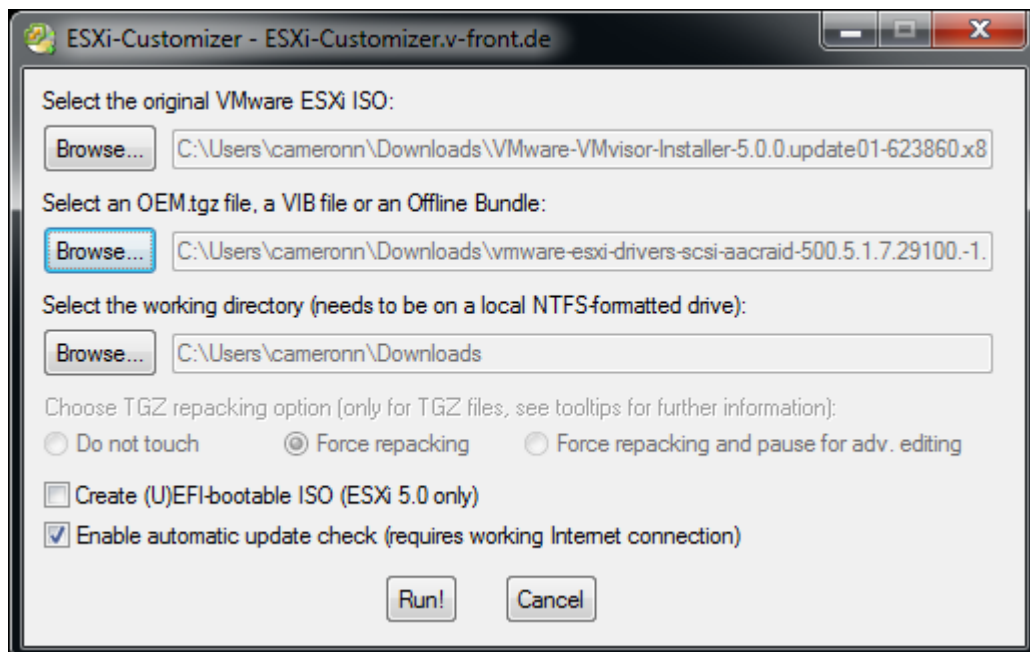


Creating a VMware ESXi 5.5 Installation ISO for Adaptec Series 6/7/8 Controllers Updated 11-2-15

*This process creates a VMware installation CD that includes the latest Adaptec driver
Once you have made this you can either clone the CD or just keep making more versions*

1. Download ESXi-Customizer-v2.7.1 from:
<http://v-front.blogspot.com.au/p/esxi-customizer.html>
2. Run downloaded file
It creates a folder structure in downloads folder called ESXi-Customizer-v2.7.
Within that folder is an executable called: ESXi-Customizer
Note there is no start program item – you simply run the executable by double-clicking on it
3. Download latest esxi5.5 drivers from Adaptec website
Open tgz file
*There is a folder for esxi5.5 -
inside this is the offline.zip and .vib file*
Drag the .VIB file for your OS to your downloads folder
4. Run ESXi-Customizer executable - fill in dialog as follows (relatively speaking):
First box points to your esxi 5.5 ISO
Second box points to your VIB file
(note you need to change file type from zip to vib in bottom right hand corner of screen)
Third box points to where you want the customised ISO to be placed when finished

Note that the information in the screenshot below may not be completely accurate for driver version etc



5. Click on "Run!" ... answer yes when prompted about overwriting existing driver file